

1. Предел прочности на изгиб и коэффициент вариации инструментального материала		
ИМ	$\sigma_{изг.ср.}$ МПа	$m$
ВК6	1550	3,3
ВК6+И.Б.	1600	5,0
ВК6+TiN	1620	5,0
ВК6+(Ti,Cr)N	1680	6,0

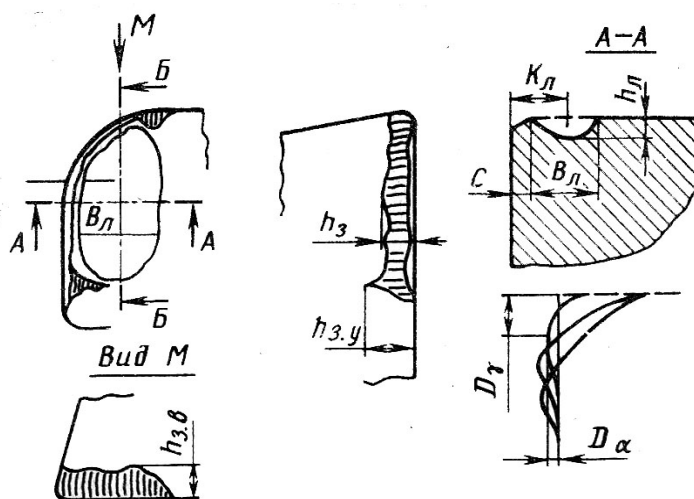
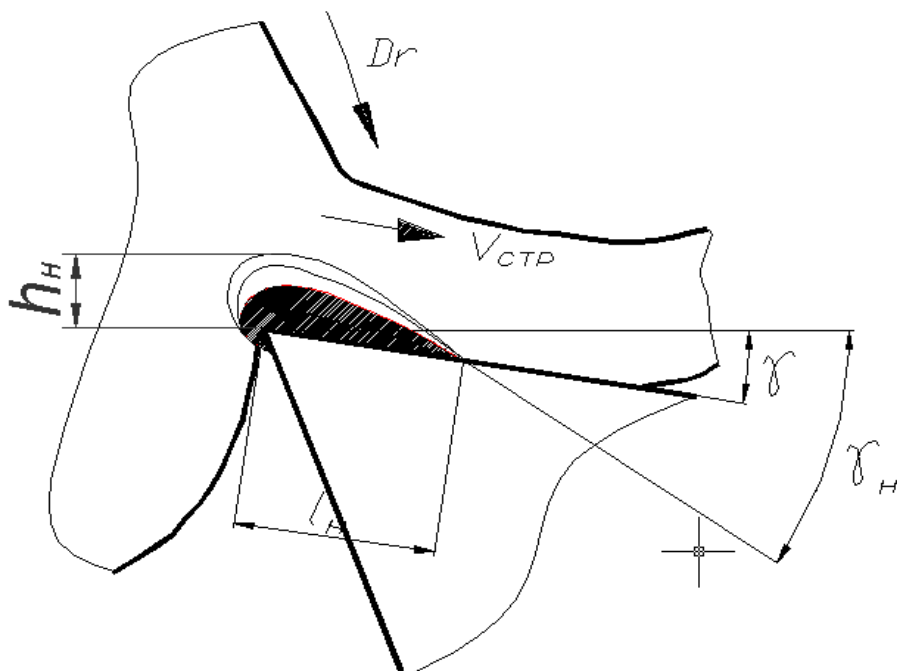
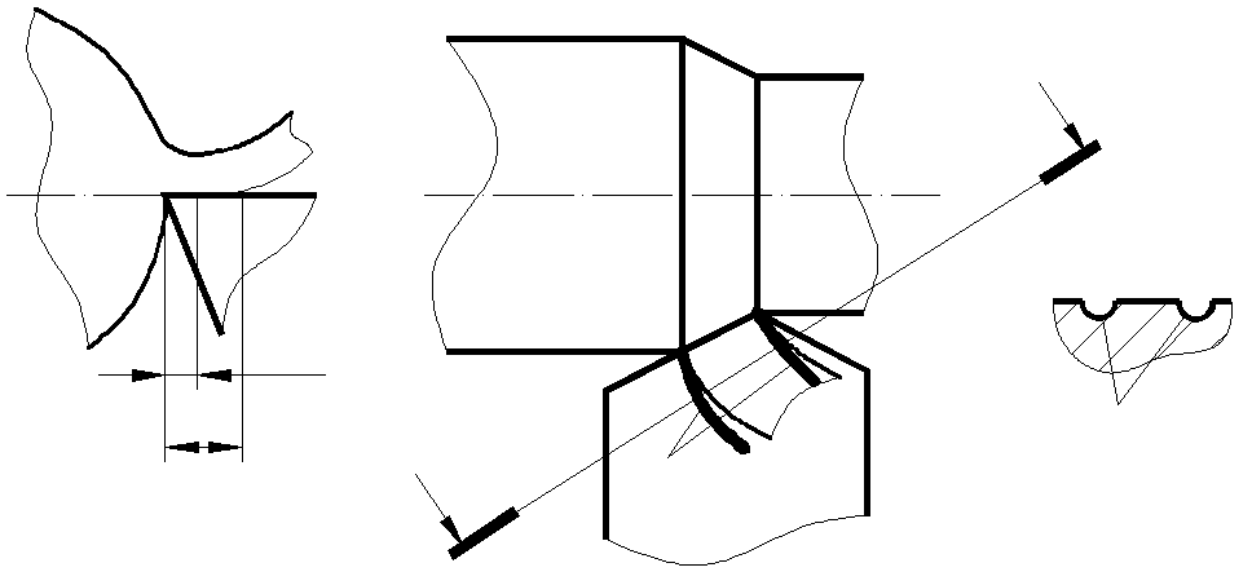
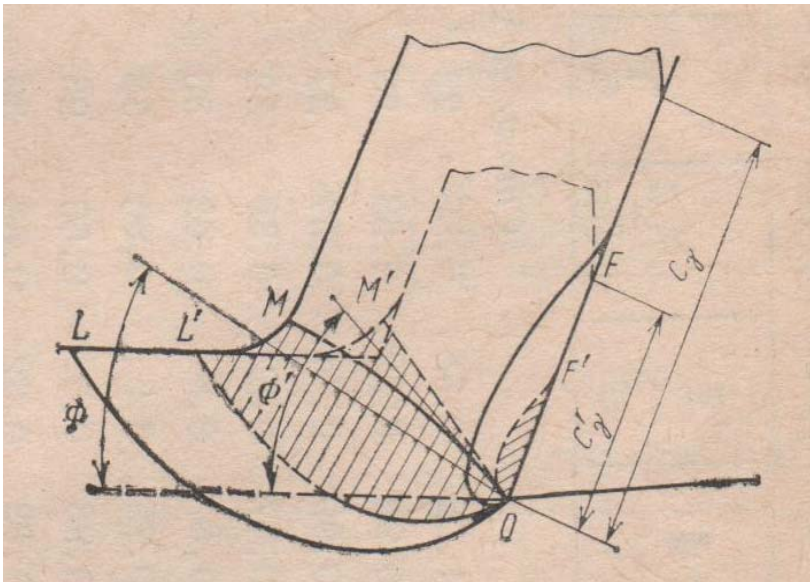
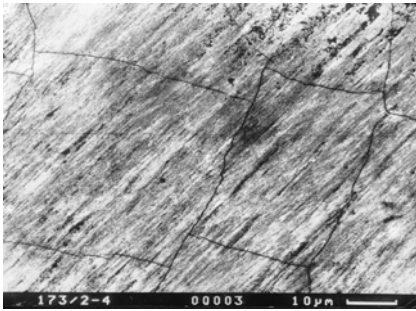
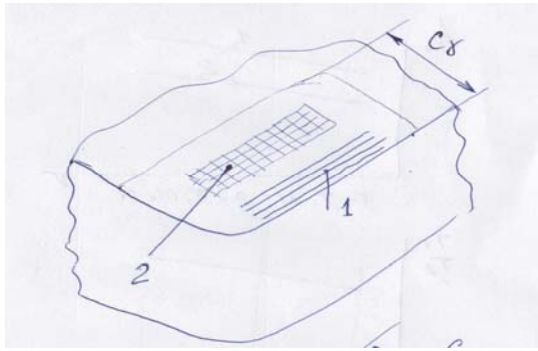
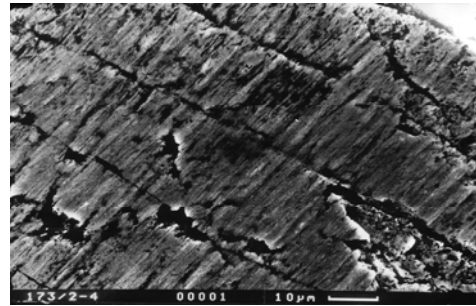


Рис. 33. Схема изнашивания контактных площадок режущего инструмента

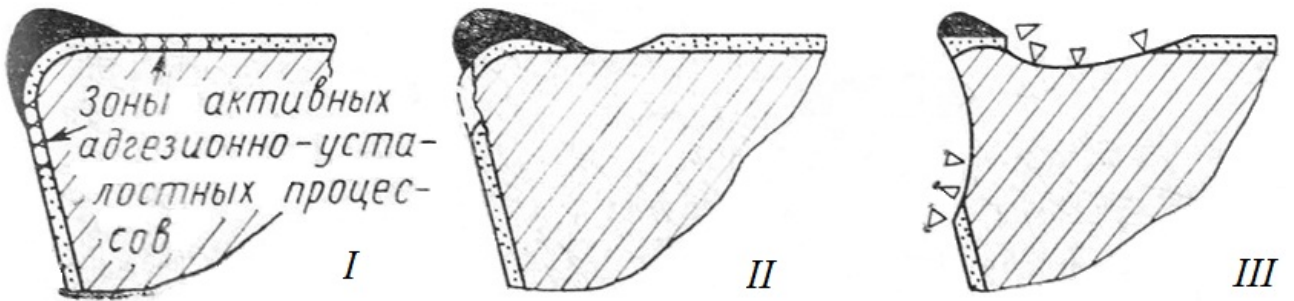


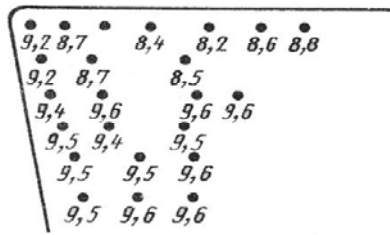


б)

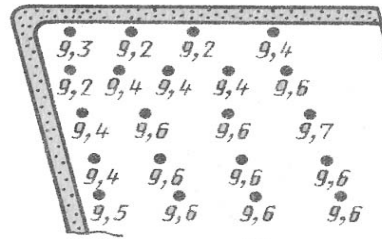


в)

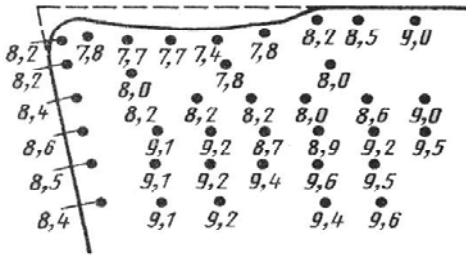




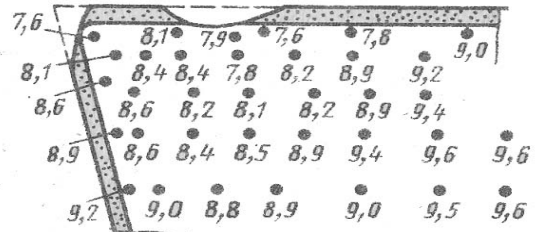
a)



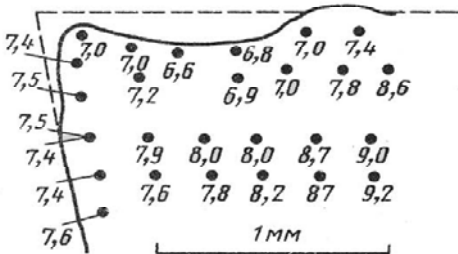
a)



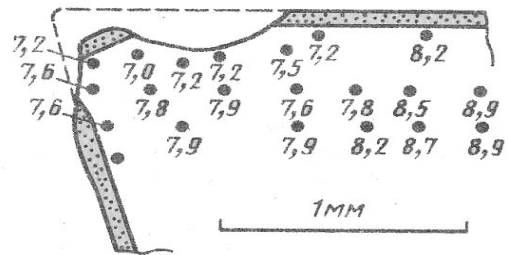
b)



b)



b)



b)

